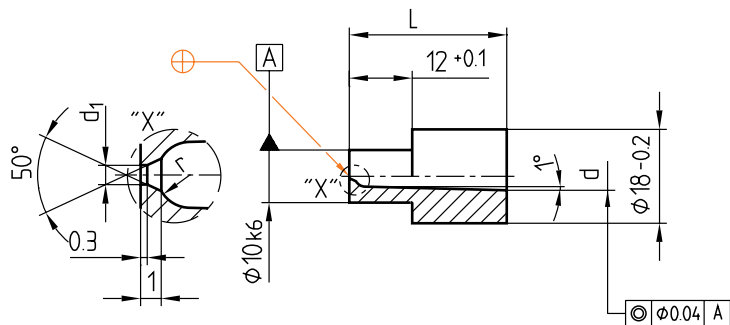


Z516/...

Mat.: 1.2343/52 ± 2 HRC

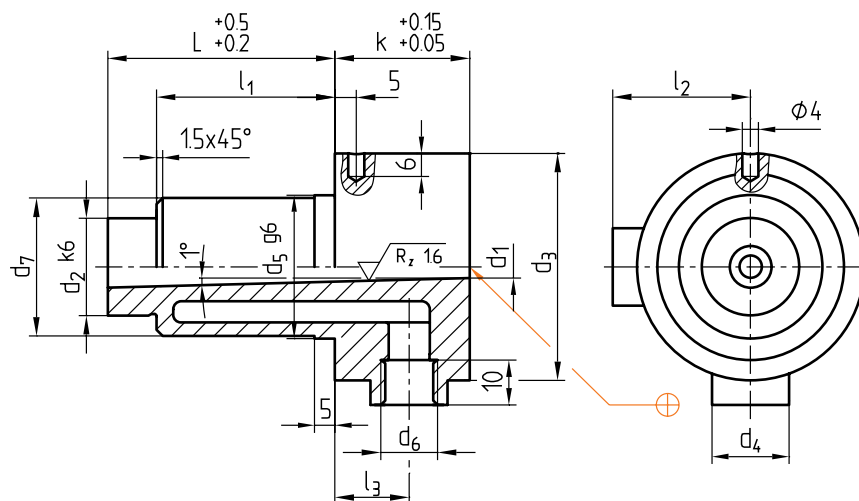


► Info

r	d	L	d <sub>1</sub>	Nr./No.
1,5	4	30	0,8	Z516/4 x30/0,8
2	5,4			5,4x30/0,8

Z518/...

Mat.: 1.2363/54 ± 2 HRC



► Info

k	d <sub>3</sub>	l <sub>3</sub>	l <sub>2</sub>	l <sub>1</sub>	d <sub>7</sub>	d <sub>5</sub>	d <sub>4</sub>	d <sub>6</sub>	d <sub>2</sub>	L	d <sub>1</sub>	Nr./No.
23	45	13,5	28,5	36	25	26	15	M10x1	18	46	4	Z518/18x 46/4
				46								56
				66								76
				86								96
32	56	18	34	44	34	35	19	M14x1,5	24	56	5,5	Z518/24x 56/5,5
				64								76
				84								96
				104								116

This is trial version  
www.adultpdf.com